

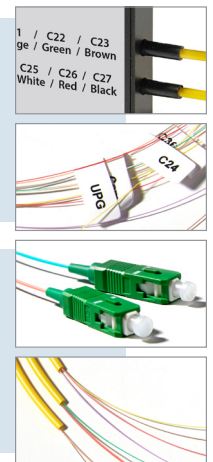
Traymount Digital Ethernet / Enterprise,
DWDM, Dual TP (SC/APC), UPG, EXP



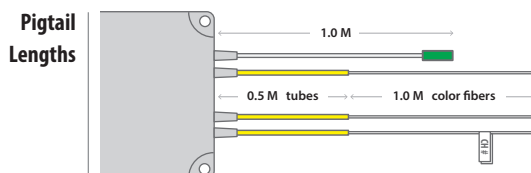
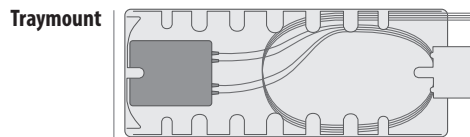
LABELING: labeled on mux housing (Channel & color) and individual fiber tags (Channel)
Tx/Rx: Test Ports **COM:** Common **C#:** Channels
UPG: Upgrade (Daisy Chain)
EXP: Express (CWDM Passthru)

TEST PORT PIGTAILS: 900um colored tight buffer w/ SC/APC connector

CHANNEL PIGTAILS: 2mm Tube w/ 4 CHs + Colored 250um Breakout, No Connector (NC)



Optical Specifications	Parameters	Unit	Specification
	Operating Wavelength	nm	1260~1635
	Channel Spacing	GHz	100
	Bandwidth @ 05db	nm	ITU +/- 0.125
	UPG Channel	nm	1520~1570 except DWDM Channel
	Express Port Wavelength	nm	1260~1520 & 1570~1635
	Test Port Tx	dB	-20 ± 1
	Test Port Rx	dB	-20 ± 1
	Ripple	dB	≤ 0.50
	Adjacent Channel Isolation	dB	≥ 30
	Non-adjacent Channel Isolation	dB	≥ 45
	Express Channel Isolation	dB	≥ 12
	UPG Channel Isolation	dB	≥ 12
	PDL	dB	≤ 0.25
	PMD	ps	≤ 0.15
	Directivity for DWDM Channel	dB	≥ 55
	Directivity for UPG	dB	≥ 45
Environmental Specifications	Operation Temperature Range	°C	-40~85
	Storage Temperature Range	°C	-40~85
	Operation humidity	%	5-95
	Power Handling	mW	300



4 Channel Digital Ethernet / Enterprise



Parameters	Unit	Specification
CH Insertion Loss	db	≤ 2.3
Express Port Insertion Loss	db	≤ 2.0
UPG Port Insertion Loss	db	≤ 2.0
Insertion Loss Uniformity	dB	≤ 1.0
Dimensions	in	3.5 x 2.0 x 0.3

ITU Channel Plan	MFG item #
CH: 20-23	5-2000-07347-61
CH: 24-27	5-2000-07347-62
CH: 28-31	5-2000-07347-63
CH: 32-35	5-2000-07347-64
CH: 36-39	5-2000-07347-65
CH: 40-43	5-2000-07347-66
CH: 44-47	5-2000-07347-67
CH: 48-51	5-2000-07347-68
CH: 52-55	5-2000-07347-69
CH: 56-59	5-2000-07347-60

8 Channel Digital Ethernet / Enterprise



Parameters	Unit	Specification
CH Insertion Loss	db	≤ 3.1
Express Port Insertion Loss	db	≤ 2.0
UPG Port Insertion Loss	db	≤ 2.8
Insertion Loss Uniformity	dB	≤ 1.0
Dimensions	in	3.8 x 3.0 x 0.3

ITU Channel Plan	MFG item #
CH: 20-27	5-2000-07348-61
CH: 28-35	5-2000-07348-62
CH: 36-43	5-2000-07348-63
CH: 44-51	5-2000-07348-64
CH: 52-59	5-2000-07348-65

10 Channel Digital Ethernet / Enterprise



Parameters	Unit	Specification
CH Insertion Loss	db	≤ 3.1
Express Port Insertion Loss	db	≤ 2.0
UPG Port Insertion Loss	db	≤ 2.8
Insertion Loss Uniformity	dB	≤ 1.0
Dimensions	in	3.8 x 3.8 x 0.3

ITU Channel Plan	MFG item #
CH: 20-29	5-2000-07369-10
CH: 30-39	5-2000-07369-11
CH: 40-49	5-2000-07369-12
CH: 50-59	5-2000-07369-13

20 Channel Digital Ethernet / Enterprise



Parameters	Unit	Specification
CH Insertion Loss	db	≤ 3.9
Express Port Insertion Loss	db	≤ 2.0
UPG Port Insertion Loss	db	≤ 3.3
Insertion Loss Uniformity	dB	≤ 1.5
Dimensions	in	4.7 x 3.8 x 0.3

ITU Channel Plan	MFG item #
CH: 20-39	5-2000-07350-61
CH: 40-59	5-2000-07350-62

40 Channel Digital Ethernet / Enterprise



Parameters	Unit	Specification
CH Insertion Loss	db	≤ 4.8
Express Port Insertion Loss	db	≤ 2.0
UPG Port Insertion Loss	db	≤ 4.0
Insertion Loss Uniformity	dB	≤ 2.0
Dimensions	in	5.9 x 5.5 x 0.3

ITU Channel Plan	MFG item #
CH: 20-59	5-2000-07375-01

Dense Wavelength Division Multiplexing (DWDM)											
ITU Grid: C-Band, 100 GHz Spacing											
Channel (#)	Frequency (GHz)	Wavelength (nm)	Channel (#)	Frequency (GHz)	Wavelength (nm)	Channel (#)	Frequency (GHz)	Wavelength (nm)	Channel (#)	Frequency (GHz)	Wavelength (nm)
19	191900	1562.23	37	193700	1547.72	55	195500	1533.47			
20	192000	1561.42	38	193800	1546.92	56	195600	1532.68			
21	192100	1560.61	39	193900	1546.12	57	195700	1531.9			
22	192200	1559.79	40	194000	1545.32	58	195800	1531.12			
23	192300	1558.98	41	194100	1544.53	59	195900	1530.33			
24	192400	1558.17	42	194200	1543.73	60	196000	1529.55			
25	192500	1557.36	43	194300	1542.94	61	196100	1528.77			
26	192600	1556.56	44	194400	1542.14	62	196200	1527.99			
27	192700	1555.75	45	194500	1541.35	63	196300	1527.22			
28	192800	1554.94	46	194600	1540.56	64	196400	1526.44			
29	192900	1554.13	47	194700	1539.77	65	196500	1525.66			
30	193000	1553.33	48	194800	1538.98	66	196600	1524.89			
31	193100	1552.52	49	194900	1538.19	67	196700	1524.11			
32	193200	1551.72	50	195000	1537.4	68	196800	1523.34			
33	193300	1550.92	51	195100	1536.61	69	196900	1522.56			
34	193400	1550.12	52	195200	1535.82	70	197000	1521.79			
35	193500	1549.32	53	195300	1535.04	71	197100	1521.02			
36	193600	1548.52	54	195400	1534.25	72	197200	1520.25			

Channel	Color Code	Channel	Color Code
COM	White		
EXP	Black	Test RX	Aqua
UPG	Orange	Test TX	Rose
16	Red	40	Blue
17	Black	41	Orange
18	Yellow	42	Green
19	Violet	43	Brown
20	Blue	44	Slate
21	Orange	45	White
22	Green	46	Red
23	Brown	47	Black
24	Slate	48	Yellow
25	White	49	Violet
26	Red	50	Blue
27	Black	51	Orange
28	Yellow	52	Green
29	Violet	53	Brown
30	Blue	54	Slate
31	Orange	55	White
32	Green	56	Red
33	Brown	57	Black
34	Slate	58	Yellow
35	White	59	Violet
36	Red	60	Blue
37	Black	61	Orange
38	Yellow	62	Green
39	Violet	63	Brown